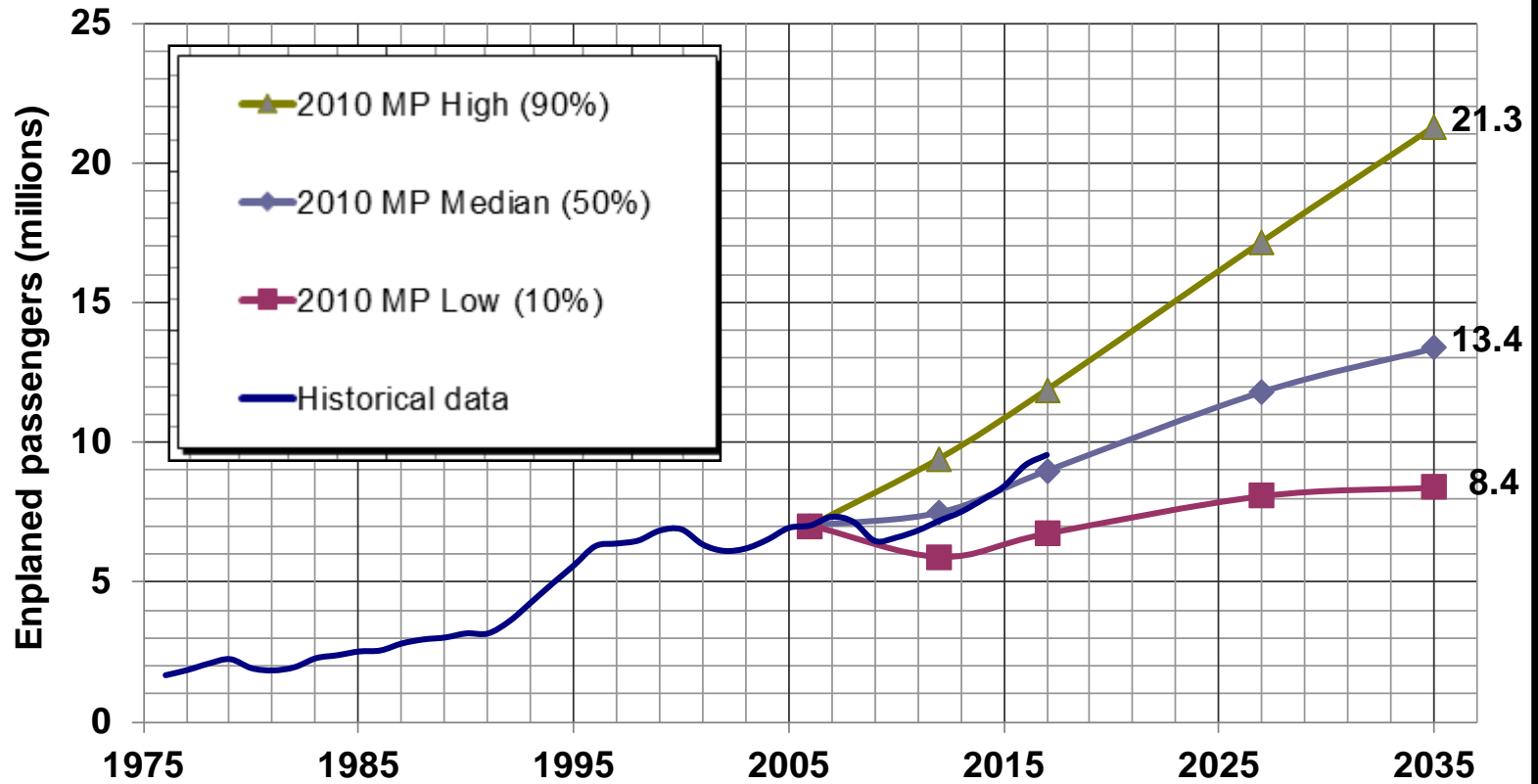


Aviation Demand Forecasts

- Probabilistic Forecast
 - Peer review
 - Key issues and trends
 - Sensitivity analysis
- Ongoing monitoring
 - Last forecast refresh – June 2016
 - 2045 design day forecast & modeling
 - Review of other industry forecasts
- Key Questions:
 - Are forecasts still appropriate planning inputs for ongoing planning & development?
 - When will we reach 21 Million Annual Passengers?



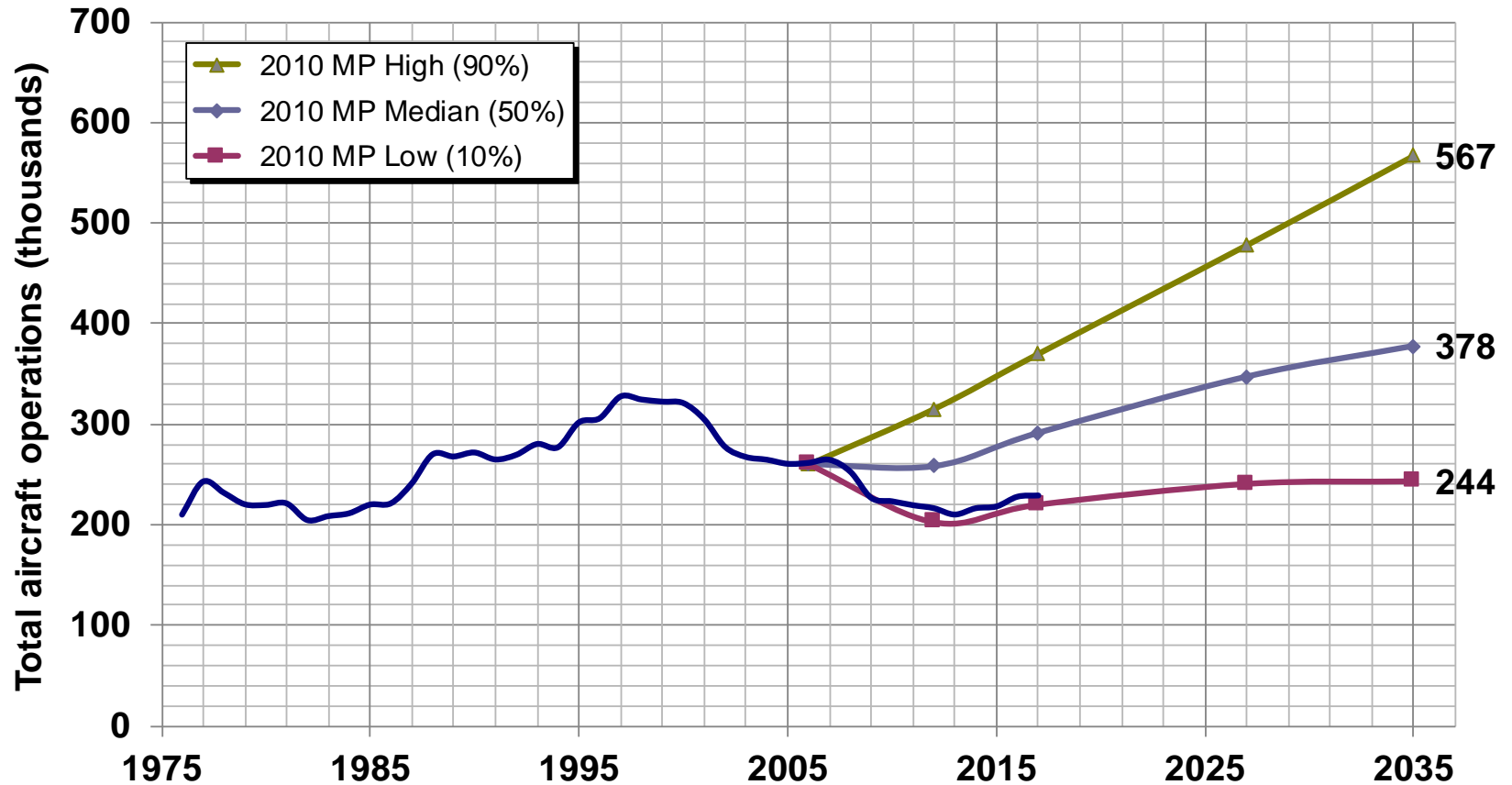
PDX PROBABILISTIC FORECASTS OF ENPLANED PASSENGERS



Sources: Historical: Port of Portland records. 2010 Master Plan forecasts: Jacobs Consultancy and NEXTOR, April 2008



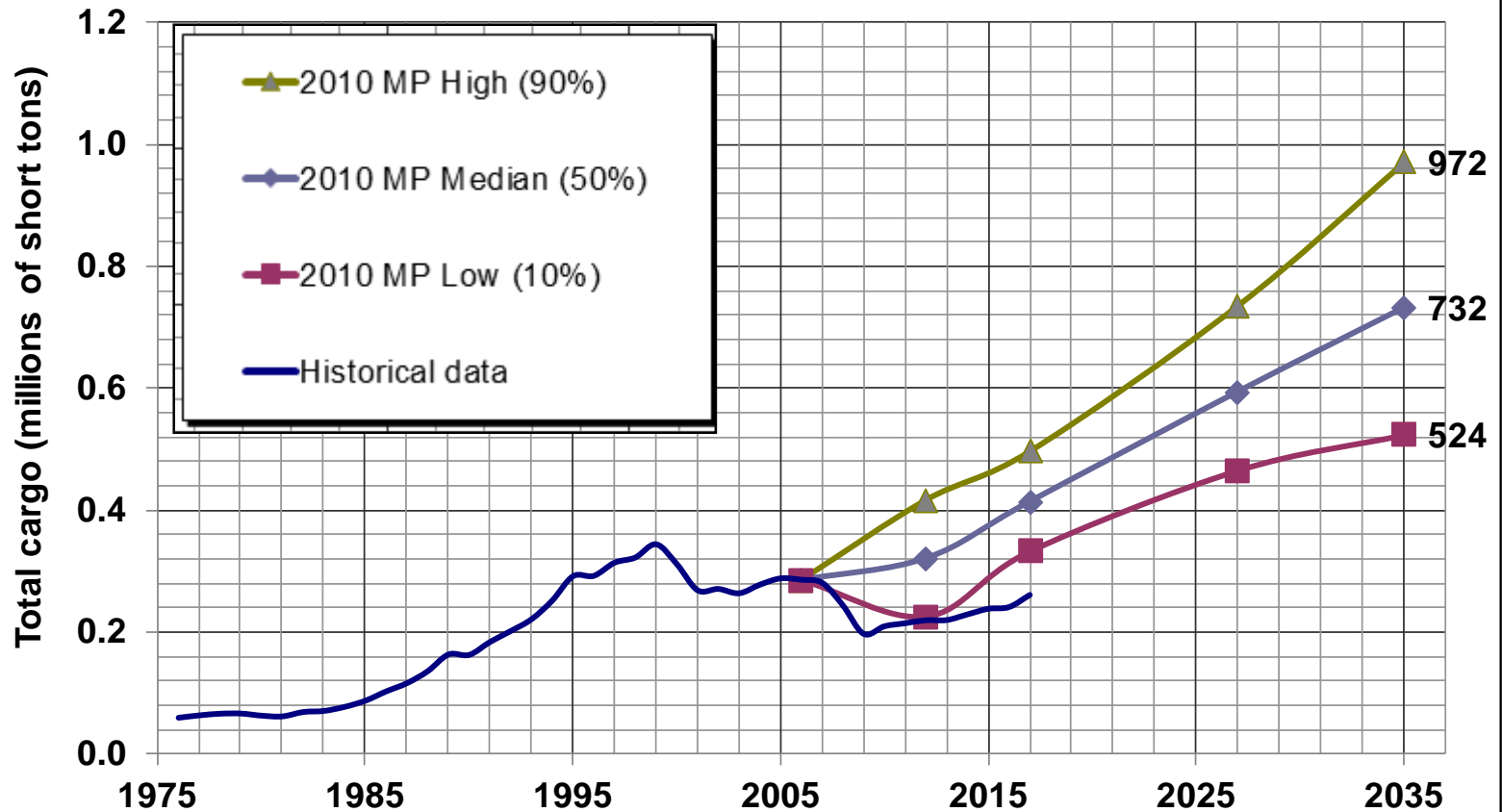
PDX TOTAL AIRCRAFT OPERATIONS FORECASTS



Sources: Historical: Port of Portland records. 2010 Master Plan forecasts: Jacobs Consultancy and NEXTOR, April 2008



PDX PROBABILISTIC FORECASTS OF TOTAL AIR CARGO



Sources: Historical: Port of Portland records. 2010 Master Plan forecasts: Jacobs Consultancy and NEXTOR, April 2008



Key Issues & Trends

- Airline profitability for over 4 years
- Strong demand for air travel continues to outpace economic growth
- Largest operating costs, fuel & labor edging up
- Cargo growth & e-commerce
- Growth related to Planning Activity Levels (PALs)
 - When do we expect to reach 21 Million Annual Passengers?
 - Why is 21 Million Annual Passengers important?



Comparison of Actual to Forecast

RELATIONSHIPS AMONG PLANNING ACTIVITY LEVELS, YEARS, AND ACTIVITY BASED ON 50TH PERCENTILE FORECASTS

PAL	Year	Actual and forecast activity		
		Total passengers (millions)	Cargo (short tons, thousands)	Aircraft operations
Actual	2009	12.9	190	227,000
1	2012	15.0	322	258,000
2	2017	18.0	414	292,000
3	2022	20.6	496	318,000
4	2027	23.7	594	347,000
5	2035	26.8	732	378,000

PAL = Planning activity level.

